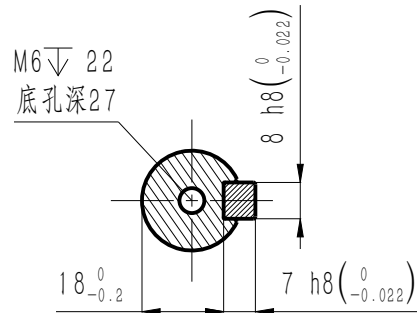


版本 Edition	变更内容 Description of the change
B	外形图模板变更

B  
2026.02.12  
正样



截面B-B

抱闸参数 Brake parameters

额定电压 Rated voltage	24±10%	V DC
额定功率 Rated power	23	W
电阻(20℃) Resistance	25±7%	Ω
额定扭矩 Rated torque	18	N·m
释放电压 Release voltage	>1.5	V
吸引电压 Pickup voltage	<18	V
吸合时间 Pickup time	<100	ms
释放时间 Release time	<60	ms
回转间隙 Rotational Clearance	<0.5° (20%额定扭矩) (20% Rated torque)	

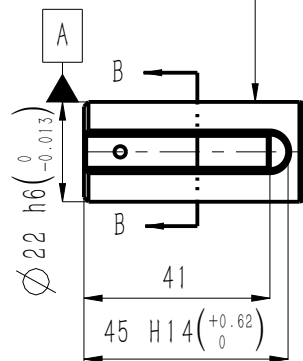
电机技术参数 Motor parameters

额定电压 Rated voltage	380	V AC
额定功率 Rated power	3	kW
额定扭矩 Rated torque	14.3	N·m
峰值扭矩 Peak torque	43	N·m
额定电流 Rated current	7.7	Arms
峰值电流 Peak current	21.1	Arms
额定转速 Rated speed	2000	rpm
峰值转速 Maximum speed	3000	rpm
扭矩系数 Torque constant	2.07	N·m/Arms
反电势常数 Back EMF constant	136.3	V/krpm
线电阻 line resistance	0.89	Ω
线电感 line inductance	7.73	mH
转动惯量 Moment of inertia	23.4±10%	kg·cm <sup>2</sup>
轴向允许载荷 Axial allowable load	196	N
径向允许载荷 Radial allowable load	565	N
极对数 Number of pole pairs	5	对

IP防护等级 Ingress Protection Rating	IP67	
绝缘等级 Insulation class	F	
绝缘电阻 Insulation resistance	>100MΩ DC500V	
电机重量 Motor weight	11.9	kg
工作温度 Operating temperature	-20℃~40℃	
工作湿度 Operating humidity	20%~80% (不结露 Non-dewfall)	
推荐安装海拔 Recommend installing altitude	<1000m(1km以上降额使用) (Derate for use above 1km)	

Ø110 h7<sub>-0.035</sub><sup>0</sup>

0.06 A



0.06 A

0.02 A

